



C-DRY Products

Rapid-drying concrete

Concretum® C-DRY is a rapid-drying concrete. The progress of construction work can be considerably accelerated using Concretum® C-DRY. Concretum® C-DRY is produced in concrete plants.

Application

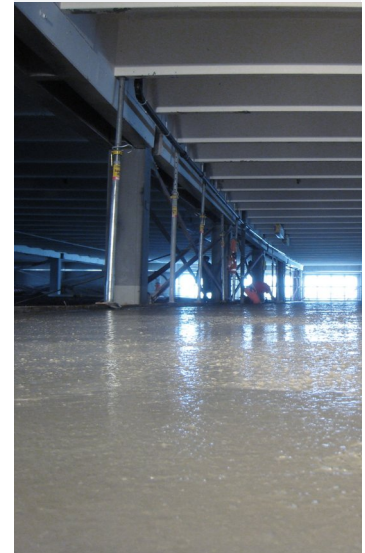
- In general for the production of construction units which are expected to dry fast.
- Maintenance of multi-story car parks and parking areas.
- Maintenance of bridges.
- Maintenance and construction of concrete carriageways and concrete coverings with very short off-times (e.g. roundabouts, bus stops).
- In general where a waterproofing system is applied on the upper layer (screed).
- Replacement and maintenance of solid railway basements.

Material Properties

- After 48 hours Concretum® C-DRY arrives at a moisture content of 4.0 CM-%. This allows continuing working (e.g. applications of waterproofing on bridges or building of floorings).
- Concretum® C-DRY is easy to process. Furthermore, the consistency stays constant for a long period of time.
- Concretum® C-DRY features low shrinkage and low heat of hydration. Therefore, construction units made of Concretum® C-DRY show low risk of cracking and are immensely durable.
- Depending on the application, Concretum® C-DRY can be reinforced by Concretum® SUPERFIBER. Please take notice of the product information on SUPERFIBER 40/8.

Further information

- [Product information C-DRY](#)
- [References](#)
- [Sources of Supply](#)



Application e.g. for repair work of car parks with short off-times 