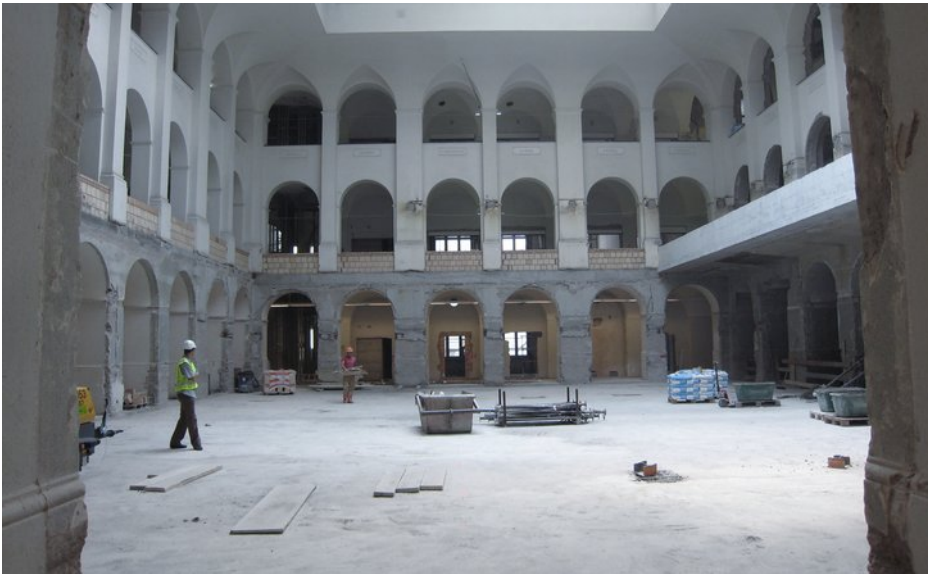




Reference

Strengthening of a Ceiling Plate

Ceiling reinforcement ETH building NO, Clausiusstrasse, Zurich/ZH



Facts

Products:
D-ZERO

Duration of the project:
June 2007

Building owner:
ETH Zurich

Concrete supplier:
Toggenburger AG

Realization:
Marti AG

Requests

The thin library slab and girder floor (year of construction 1912/13) in the ETH building NO in Clausiusstrasse had to be reinforced for reasons of load-bearing capacity problems. For the big size of as much as 12*22 m, the applied concrete should be as low-shrinking as possible.

Solution and judgement

Due to its very low shrinkage coefficient, Concretum® D-ZERO is the ideal construction material for this application. The bottom plate reinforcement was successfully realized.